

SVAR LIFE SCIENCE

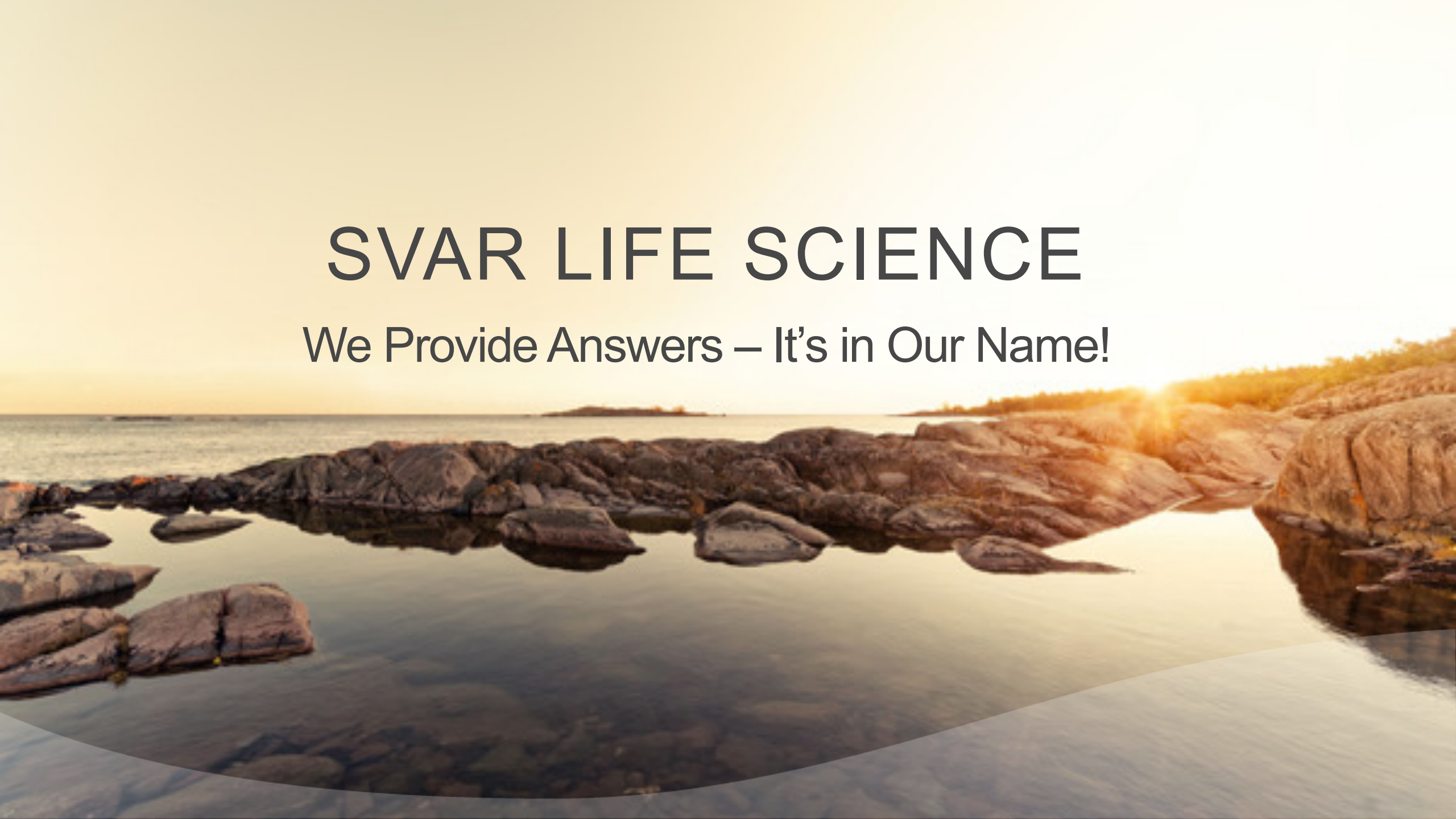
VENDOR/ TECHNICAL PRESENTATION

CASSS BioAssay September 2022

**Dr. Michael Schwenkert
Chief Technology Officer**

SVAR LIFE SCIENCE

We Provide Answers – It's in Our Name!





SVAR LIFE SCIENCE

WHO WE ARE

At Svar Life Science, we combine research and development, manufacturing and regulatory affairs with quality control and quality assurance in a small cross-functional organization.

We offer versatile assay solutions to pharma, biotech and CRO customers, as well as to our partners within diagnostics.



SVAR LIFE SCIENCE AB

Svar is a Swedish life science company that works to deliver the right answers at the right time in the pursuit of personalized medicine

THE SVAR LIFE SCIENCE GROUP OF COMPANIES



WIESLAB LABORATORY SERVICES

BIOANALYTICAL SERVICES

- Bioanalysis & Biomarkers
- Immunogenicity
- Potency

DIAGNOSTIC SERVICES

- Autoimmunity
- Neuroimmunology
- Nephrology
- Drug monitoring



CALPRO AS

Total solution for calprotectin in faeces:

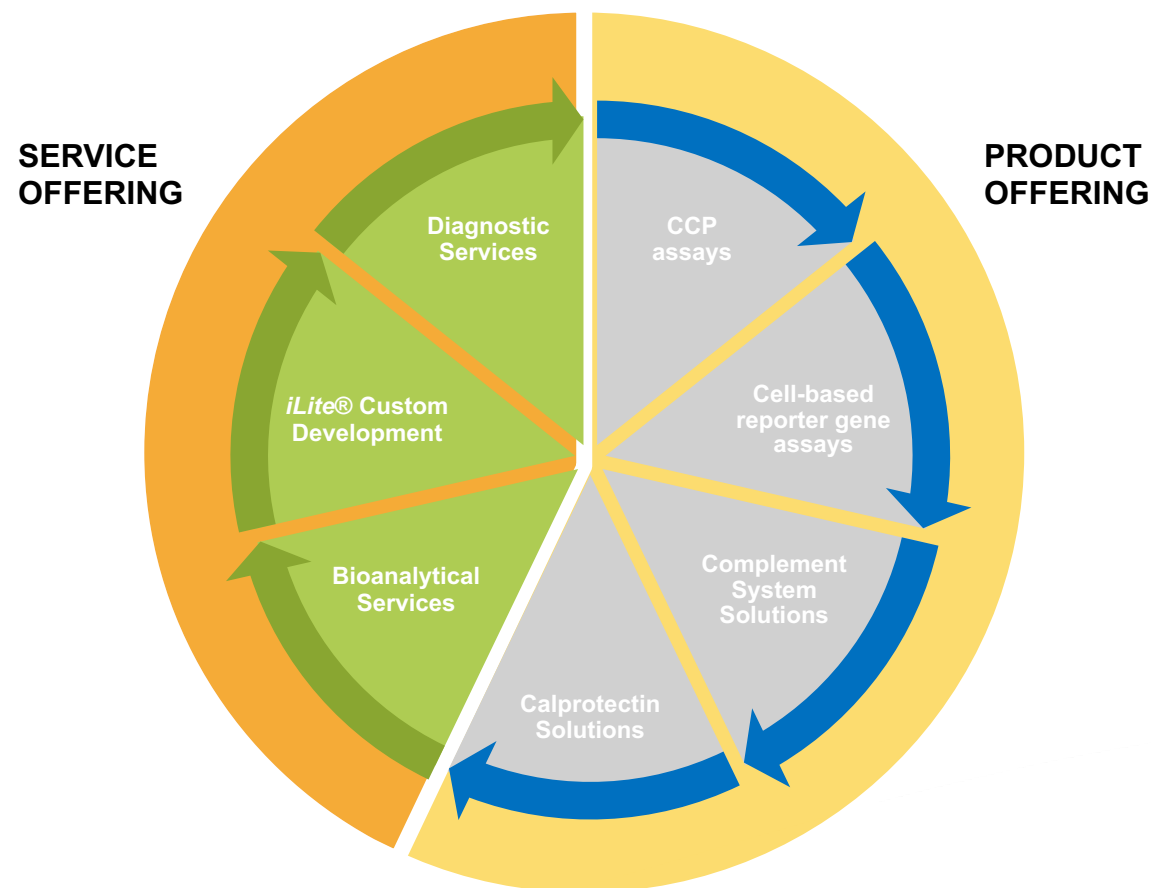
- CalproLab™ ELISA lab test
- EasyExtract extraction device
- CalproSmart™ HOME home test
- CalproSmart™ OFFICE POC test

SVAR LIFE SCIENCE

WHAT WE DO

Simply put, we provide the answers that our customers need throughout the entire drug development value chain – from early discovery through the clinical.

Svar offers a comprehensive product portfolio supporting the development of new drugs and providing tools for patient diagnosis and monitoring within inflammatory diseases.



SVAR LIFE SCIENCE

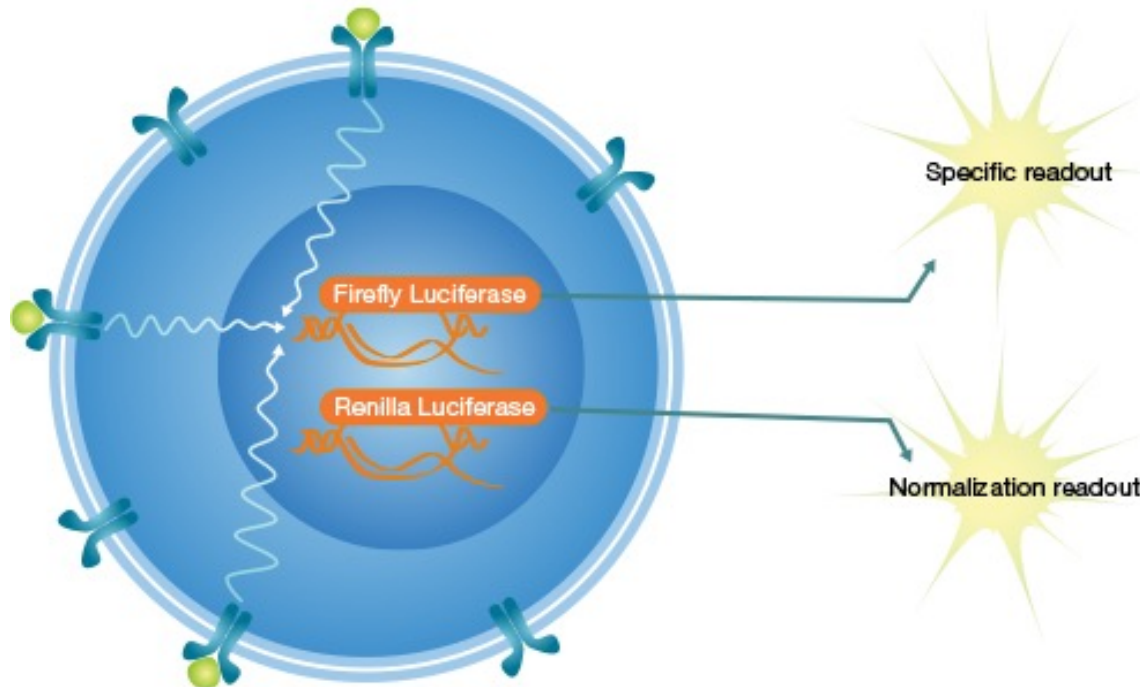
FUNCTIONAL CELL-BASED BIOASSAYS

If it binds, it shines!

FEATURES & BENEFITS

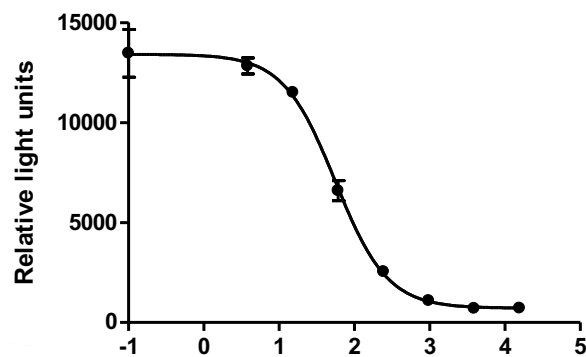
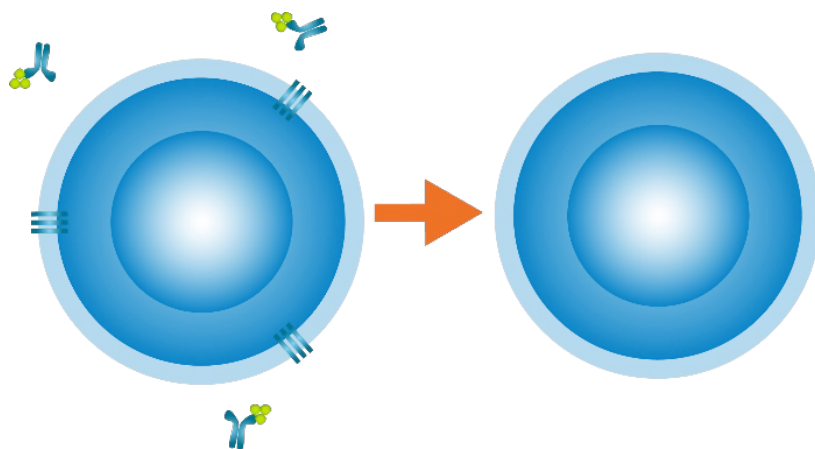
The special features of the patented *iLite*® technology are:

- **Highly specific** reporter gene cell lines
- Very **sensitive cell** line responses with large assay windows (>10 fold inductions)
- **Normalization gene**, which eliminates unwanted matrix effects
- Due to format - **Assay Ready Cells** – ready-to-use from the freezer, benefits like:
 - No culturing of cells
 - High reproducibility
 - Assays within a workday

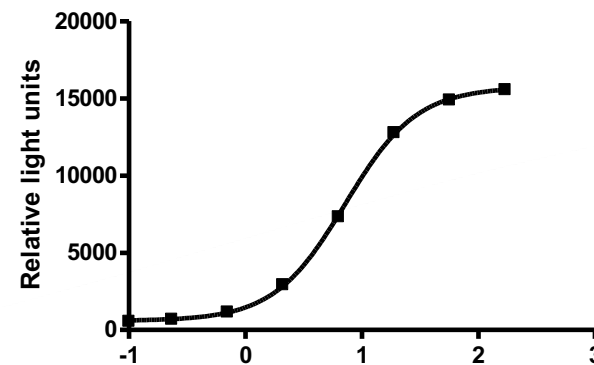
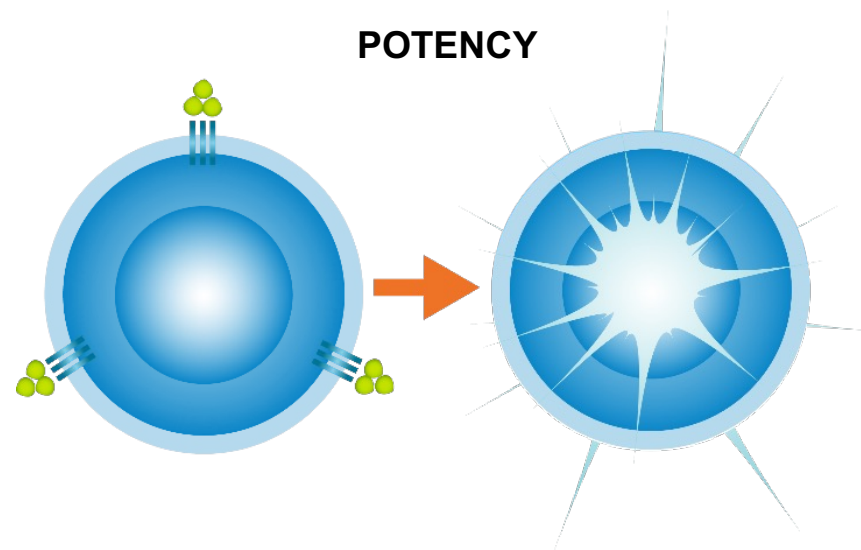


MAIN APPLICATIONS

IMMUNOGENICITY

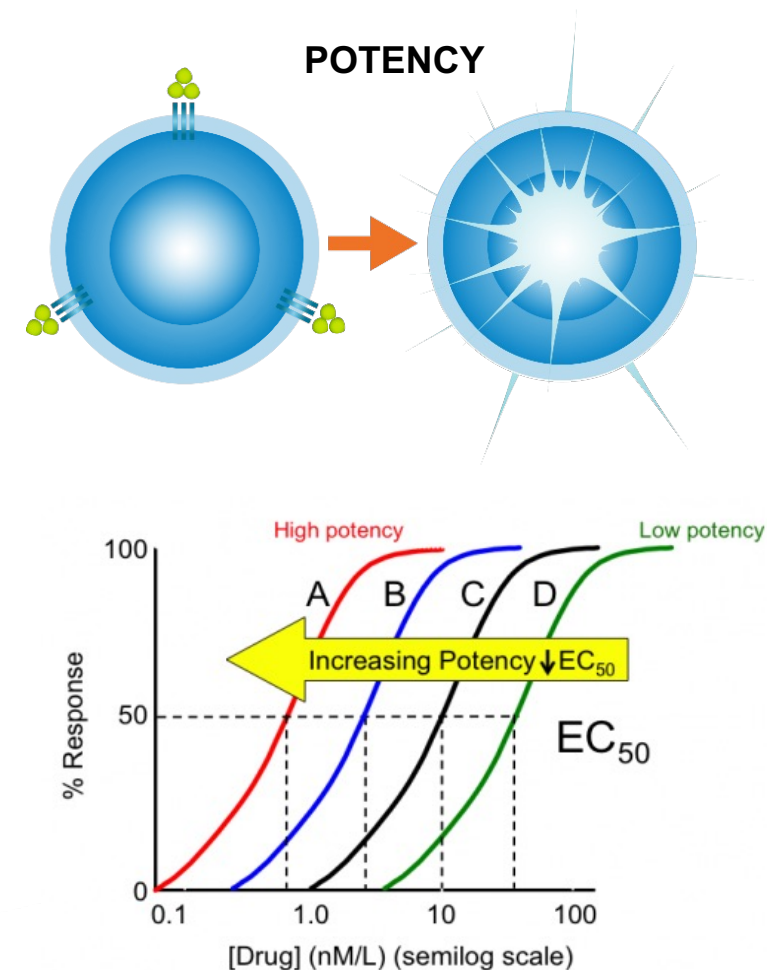


POTENCY



POTENCY APPLICATION

- A potency assay shall represent the product's mechanism of action (i.e., relevant therapeutic activity or intended biological effect)
- Concentration and functionally of the drug can be determine in a dose – response curve, where the amount of light generated is directly correlated o the potency/efficacy and concertation of the drug



ASSAY READY FORMAT

- The Assay Ready format **decreases timelines and workload**
 - **No cell culturing, no pre-seeding**
 - **Straight forward, easy to use protocol**
 - **Quick assay turnaround times (3-6h)**
- The Assay Ready format gives **superior performance**



SVAR LIFE SCIENCE

FUNCTIONAL COMPLEMENT ASSAYS

Let us guide you on the Complement Path!



WIESLAB BIOANALYTICAL SERVICES

ANSWERING TO THE COMPLEXITIES OF BIOASSAYS

A specialized service laboratory
- with scientific expertise & advanced technologies



WIESLAB BIOANALYTICAL SERVICE

WHAT WE OFFER

- **Assay feasibility, development and validation**
- **Immunogenicity Testing**
Detection and confirmation of ADAs and NABs
- **Pharmacokinetics (PK) & Pharmacodynamics (PD)**
Expertise in bioanalysis of large molecules
- **Toxicokinetics (TK) testing**
Assessment and characterization of biologic safety of large molecules
- **Biomarker testing**
Over 250 immunology markers at your service
- **Potency Testing**
Determinate the functional activity of your drug molecule
- **Consultancy Services**
Optimize your study's assay strategy and improve submission success



WIESLAB BIOANALYTICAL SERVICE

QUALITY SYSTEM & ACCREDITATION

- OECD GLP
- ISO15189
- GCLP/GCP principles followed
- GMP certification to be expected in 2022
- Electronic QMS

We deliver high quality standards and processes - ensuring that regulatory requirements are met for every project.

OFFERING THE BEST ANALYTICAL TECHNOLOGIES

Ligand-binding assays:

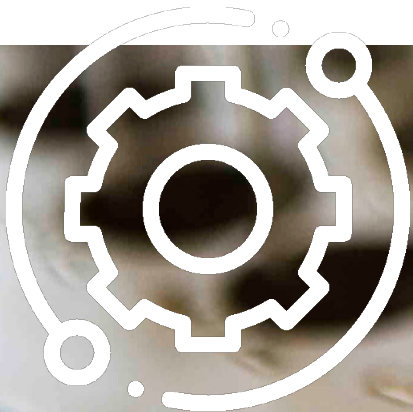
- MSD (MESO QuickPlex SQ 120)
- Quanterix SIMOA HD-X Analyzer
- Enzyme-linked Immunosorbent Assay (ELISA)
- Standard plate readers (Tecan F50 and F200)
- RIA (3470 Wizard2 Gamma Counter)

Cell-based assays:

- Reporter Gene cell-based assays
(*iLite*® or customer provided cell lines)
- Neutralizing antibody assays
 - Potency assays

Platforms include:

- Absorbance
- Chemiluminescence
- Electrochemiluminescence
- Fluorescence
- Radioimmunochemistry



SVAR LIFE SCIENCE

SUMMARY

- **Svar Life Science**
 - Trusted and Proven One Stop Shop for Bioassay needs
- **Unique Combination of Products and Services for drug development**
- **Examples**
 - *iLite*® Reporter Cells & Development / Validation of Potency Assay
 - *iLite*® Reporter Cells & Development / Validation of NAb Assay
 - Complement Assays & Screening / Discovery of Complement Drugs